

# INSTALL/REMOVE USB DRIVER

## 1.1. USB drivers setup

This guide describes the procedure in order to install correctly the USB drivers for software and instruments here below listed.

This procedure is applicable to Windows® 2000, Xp, Vista and Windows 7 operative systems.  
For Windows 98 and Windows ME, please refer to the "*Installation Guide of USB drivers for Windows 98 and ME operative systems*" under *Documents* section available inside the CDRom.

**Do not connect the instrument to the USB port before drivers installation.**

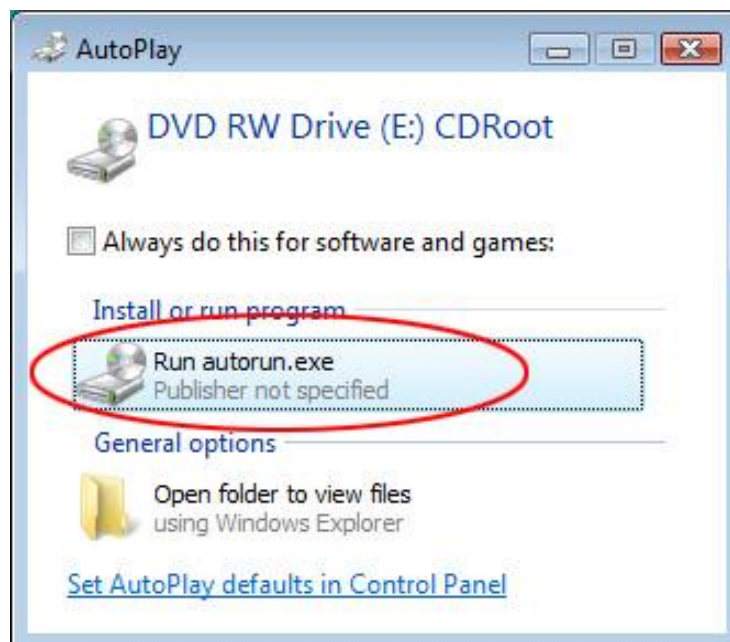
Applicable to the following software/instruments:

Software	Instruments
Deltalog5 Noise Studio	Series HD2010 Series HD2110 HD2030

*Proceed as described:*

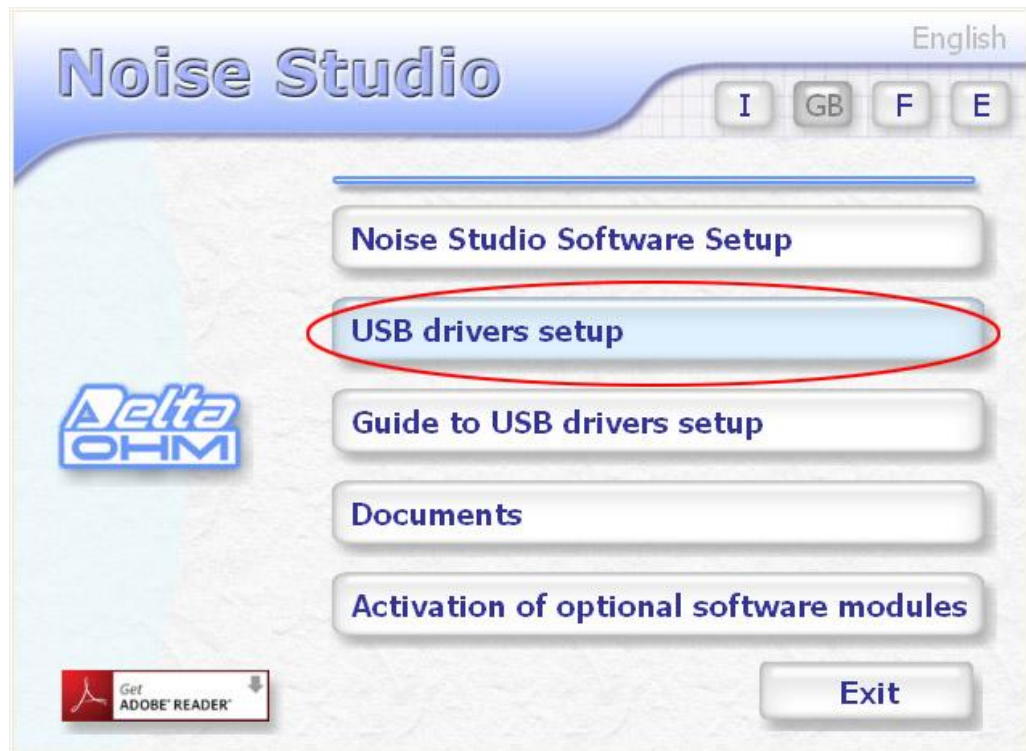
1. **Do not connect the instrument to the USB port until it is requested to.**
2. Introduce the software CDRom and wait for the staring window appears.

For Windows Vista and Windows 7 operative systems, you see the following window: chose the voice "*Run Autorun.exe*" (see note 1).

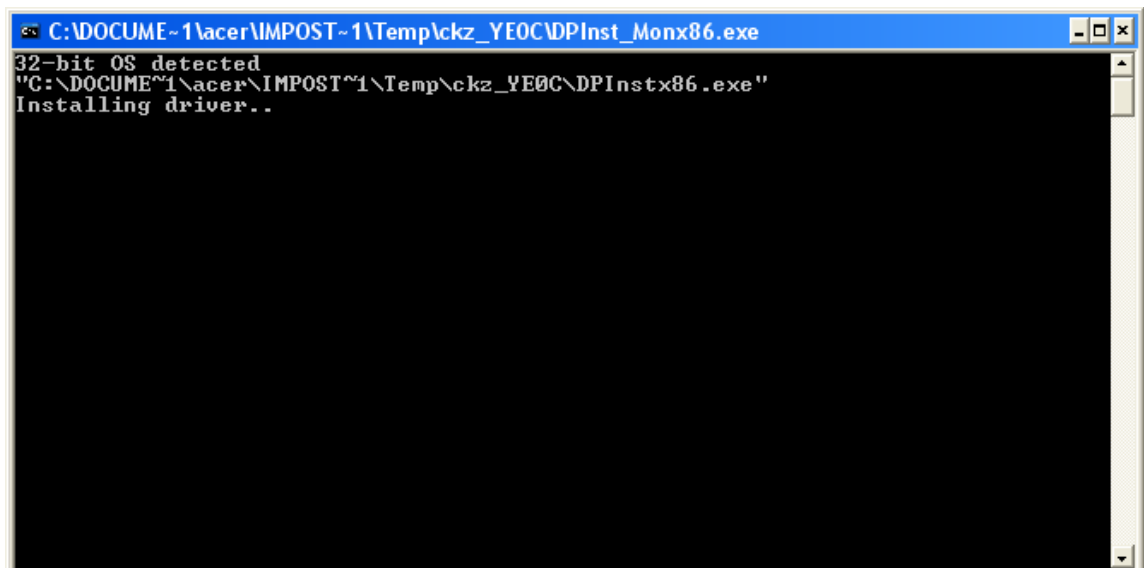


The main window of the software starts: if operating system doesn't allow software setup, see "note 1" at par.1.2.

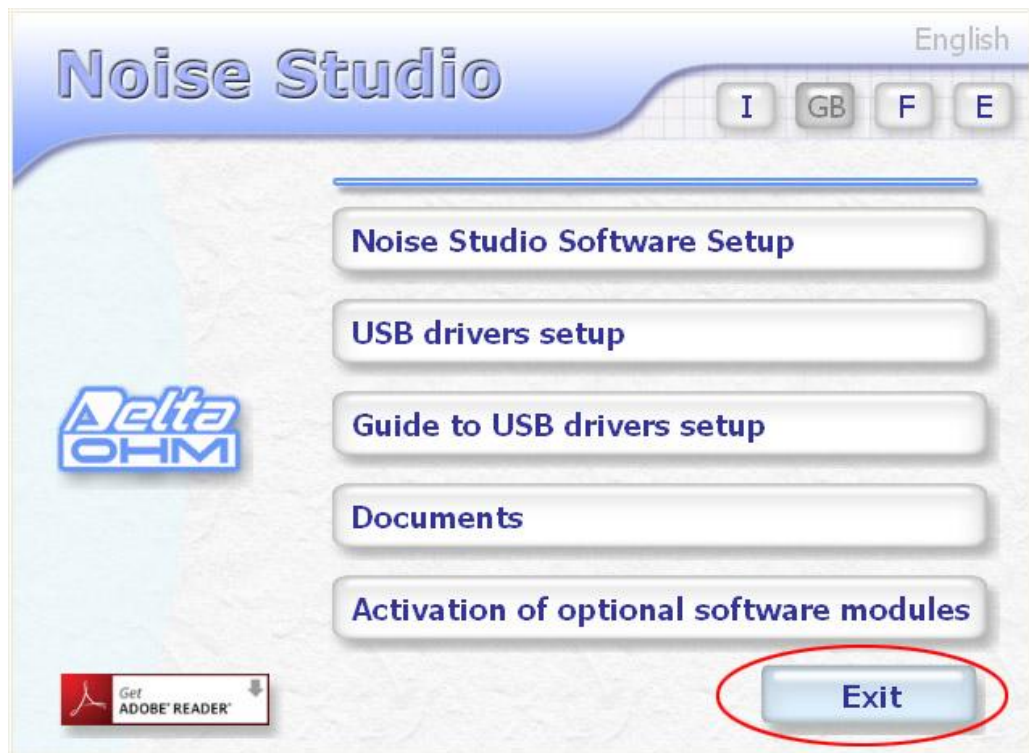
3. By the starting window of the software, click on "*USB Driver Setup*" in order to start the USB driver installation.



4. The program verifies which is the operative system version and copies the concerning drivers in a temporary folder of the PC.



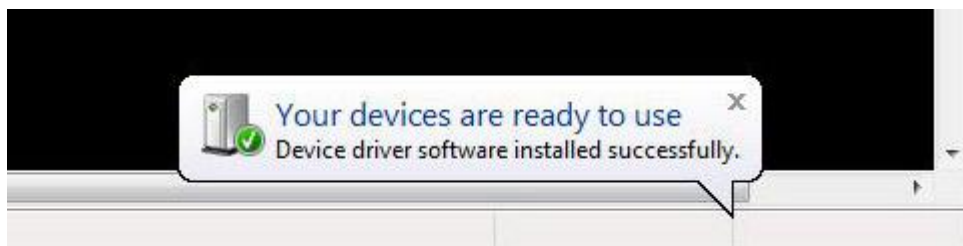
5. If you started the installation by using the CDRom, you will display a message that invites you to connect the instrument to the USB port: click on OK and close the software Delta Ohm by using EXIT key.



6. Set the "USB" item **in the instrument** menu "MENU >> General >> Input/Output >> Serial Device". Please confirm and exit from menu.
7. **Connect the instrument to the USB port and switch it on:** when Windows recognizes the new device, you will see the indication that a new device has been found.



8. Wait for a few seconds until the message of a new hardware found and ready for use appears:



9. The driver installation operation is now finished: at any further connection the instrument will be automatically recognized.

## 1.2. Installation notes

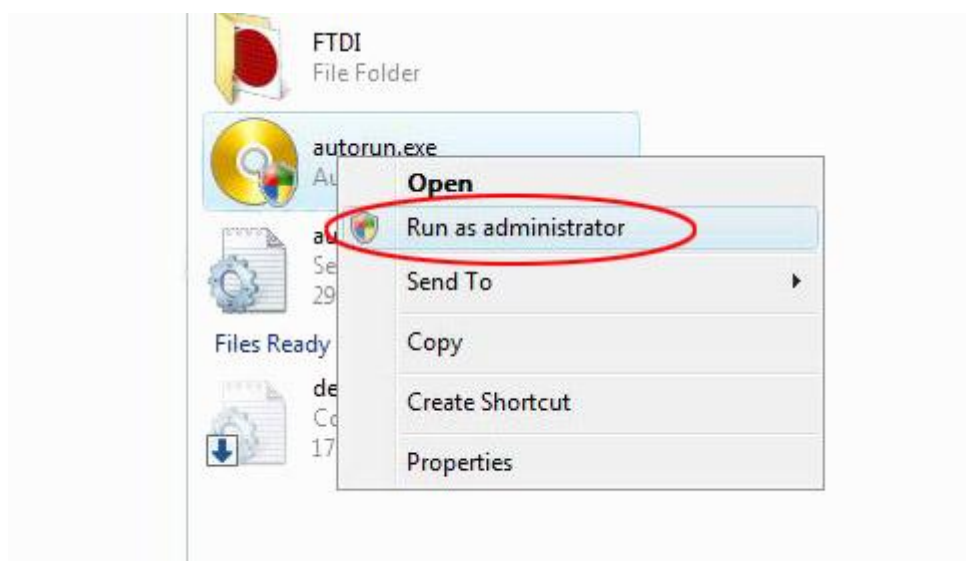
**Note 1.** For Windows Vista and Windows 7 operating systems.

For software set up administrator privileges are requested.

If the operative system prevent to open the software, re-start the PC as user with administrator privileges, insert the CDRom and, at the following window, choose the voice "*Open folder to view files*".



In the following window, click by using right key of the mouse on the file "*Autorun.exe*" and choose "*Run as administrator*":



Proceed from step 3 of paragraph 1.1.

**Note 2.** If the instrument is connected to the USB port **before the installation of the driver**, in Windows 2000 and XP systems the "*New hardware helped installation*" window appears.

In Windows Vista and Windows 7 an installation error appears in the "*Device Manager*": in any case, cancel the operation, disconnect the instrument and follow the procedure from the beginning of this guide.

**Note 3.** If you downloaded the drivers from Delta Ohm web-site:

- a. Unzip the file "*Driver\_USB\_FTDI.zip*" in a temporary folder of your PC
- b. For Windows 2000 and XP systems: use the "*DriverUSB\_Setup.exe*" by double clicking the mouse.

For Windows Vista and Windows 7 systems, click with the right key of the mouse on "*DriverUSB\_Setup.exe*" and select "*Perform as administrator*".

- c. Proceed to point 4 of the current chapter.

### 1.3. How to verify the correct driver setup

In order to verify whether all the operation has been carried out correctly, proceed as follows.

In Windows 2000 and XP systems:

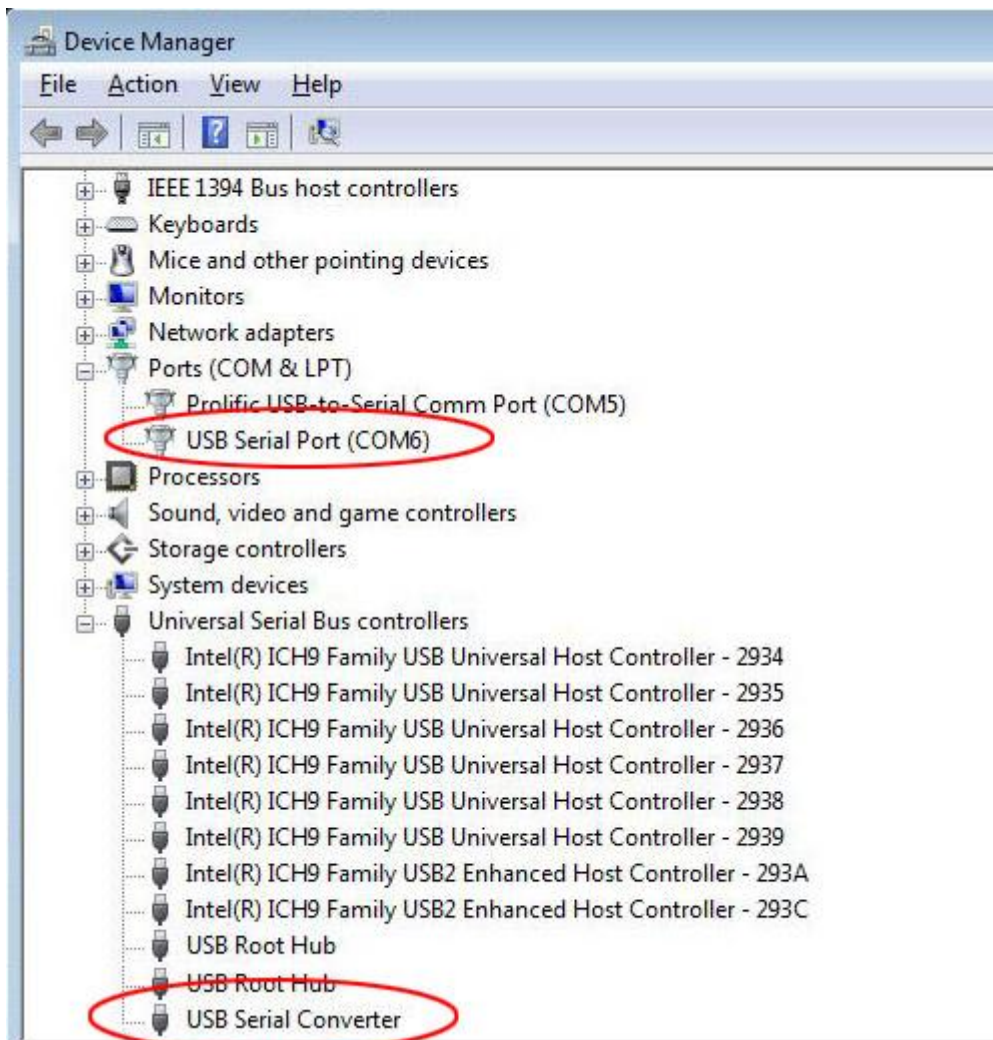
chose "START >> Settings >> Control Panel", then double click on the SYSTEM icon. Chose "Hardware >> Device Manager".

In Windows Vista and Windows 7 systems:

chose "START >> Settings" then click on "Device Manager" icon.

Connect the instrument to the USB port. You will see:

- "Ports (COM & LPT) >> USB Serial Port (COM#)". **The # value is the number assigned to the virtual serial port.**
- "Controller USB (Universal serial bus) >> USB serial converter"



When the USB cable is disconnected, these display disappear and they appear as soon as you connect the cable again.



## 2.1. Removal USB drivers

In order to remove the USB driver from you system, proceed as follows:

1. Disconnect the instrument from your PC.
2. For Windows 2000 or XP systems, under the control panel (START >> Settings >> Control Panel) start the "Application Installation".  
For Windows Vista and Windows 7 systems, under the control panel (START >> Control Panel) start "Programmes and Functionality>> Uninstall a programme".
3. From the list that appears, select one of the two items "Windows driver pack– FTDI CDM Driver Package" and press "Change/Uninstall".
4. The programme asks if you want to remove the drivers. Confirm by OK so to proceed with the uninstallation of the drivers.
5. Repeat points 3 and 4 as well for the second item "Windows driver pack – FTDI CDM Driver Package".
6. Verify is "FTDI USB Serial Converter Drivers" is present: if so, press "Changea/Uninstall". Confirm by OK in order to proceed with the uninstallation.
7. The removal of the USB drivers is complete.

If the uninstallation procedure cannot completely remove the drivers from the system, there is a utility "FTClean" is available in the CDRom of Delta Ohm software:

D:\Utility\FTClean\FTClean.exe

Start the file "FTClean.exe" by double clicking with the mouse and, in the window displayed, enter "6001" in the section PID:



Disconnect the sound level meter from the PC and press "Clean System", press "YES" on the first window and "NO" on the second. Wait for the drivers to be completely removed. At end press "EXIT".